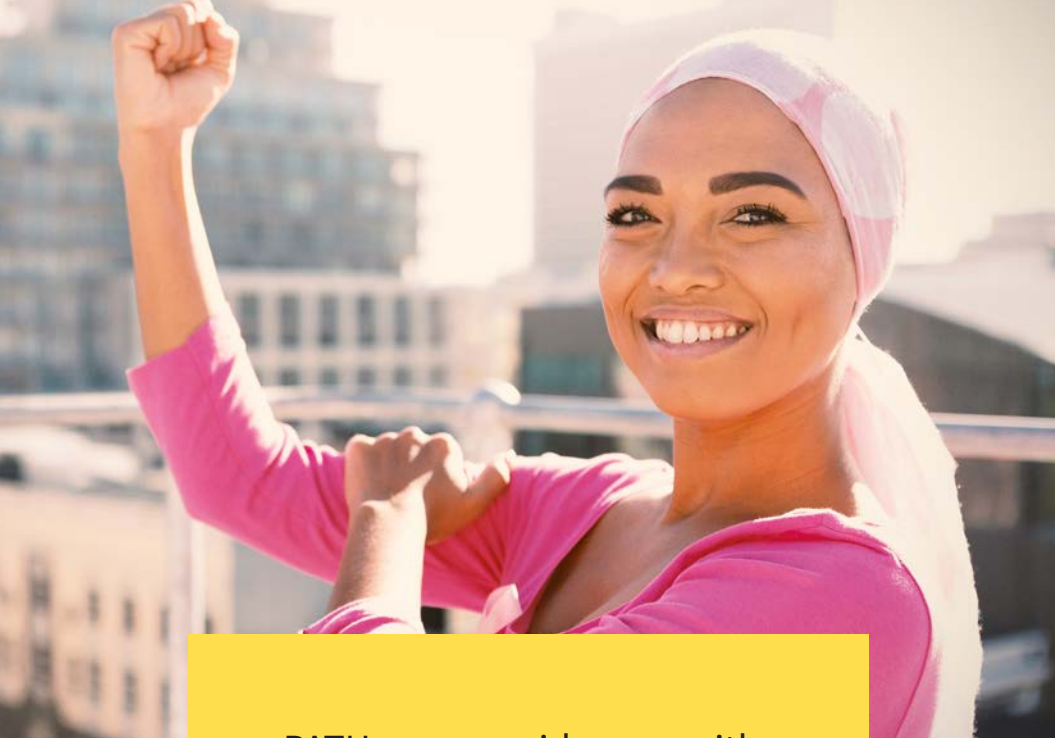




Welcome to the Amneal PATHways® Patient Support Program

Keeping you on your personal
path to more accessible
medication.



PATHways provides you with a straight-forward range of resources and services designed to easily map your personal path toward more accessible medication. Learn what is available to you and how to keep things moving along your individual treatment path.

Amneal
PATHways®
Patient Access To Health

Connecting with your Patient Access Specialist

We designed the PATHways program with individuals like you in mind. We recognize that every patient faces a different route toward treatment coverage; it's our intent to provide you the most efficient path forward. Our Patient Access Specialists are there to help navigate the way.

Your Patient Access Specialist can:

- Explain the results of your benefits investigation
- Discuss affordability options you may be eligible for
- Keep you informed about program updates as they occur

When starting along your PATHway:

1

Be sure to answer your Access Specialist's calls.

The caller ID will either appear as PATHways PSP or 1-866-426-6325. Save the phone number in your contacts so that you always recognize your Patient Access Specialist's calls.

2

Tell your Patient Access Specialist if you're having trouble affording your medication.

He or she will be able to help you figure out whether you're eligible for one of the many financial assistance options available*, including:

- The PATHways Co-Pay Debit Card
- The Amneal Patient Assistance Program
- Other third-party resources

3

Call 1-866-4-AMNEAL (1-866-426-6325) with any questions or concerns.

Monday – Friday, 8:00 AM – 8:00 PM ET

*Eligibility conditions apply. Please contact your Patient Access Specialist for more information.



Don't know which way to go?
Call us at 1-866-4-AMNEAL

[AmnealBiosciences.com/PATHways](https://www.AmnealBiosciences.com/PATHways)

Amneal PATHways® is a registered trademark of Amneal Pharmaceuticals LLC. ©2022 Amneal Pharmaceuticals LLC. All rights reserved. Printed in the US. PP-PAT-BIOSC-US-0001.08/2022